



# COA STANDARD SAILING COURSES

## COA Course C01 – Coastal East (37 nm)

**Start** – Tung Lung South Light (Port Passing) **Longitude 114°17.500'E**  
by North of 22°14.000'N

Mark 1 – North Nine Pin Island (Starboard Passing)

Mark 2 – Basalt Island (Port Passing)

Mark 3 – Shek Ngau Chau Light (Starboard)

**Gate 1** – Tai Long Tsui (Starboard Passing) **Latitude 22°25.000'N** by West of 114°26.000'E

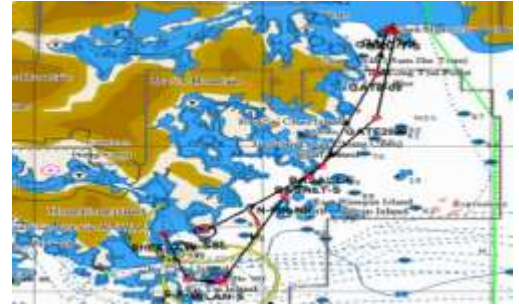
Mark 4 – Basalt Island (Starboard Passing)

**Gate 2** – North Nine Pin Light (Port) **Longitude 114°21.000'E** by South of 22°17.000'N

**Gate 3** – Waglan Island (Starboard) **Longitude 114°18.200'E** by North of 22°10.000'N

Mark 5 – Sung Kong Island (Starboard)

**Finish** – Shek O Rock (Starboard Passing) - **Latitude 22°14.040'N**



## COA Course C02 – Coastal Middle (38 nm)

**Start** – Tung Lung Island South Light (Port Passing) - **Longitude 114°17.500'E**

Mark 1 – North Nine Pin Island (Starboard)

Mark 2 – South Nine Pin Island (Starboard)

Mark 3 – Waglan Island (Starboard)

Mark 4 – Po Toi Island (Starboard)

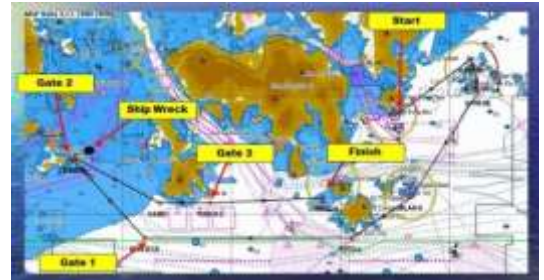
**Gate 1** – Virtual Gate line at **Longitude 114°06.000'E**, between Latitude 22°09.000'N to Starboard and Latitude 22°08.000'N to Port

**Gate 2** – Cheung Chau Rock (Starboard) **Latitude 22°12.330'N**

Mark 7 – Lamma Island (Port)

**Gate 3** – Yuen Kok Light (Port Passing) **Longitude 114°09.000'E** by North of Latitude 22°10.700'N

**Finish** – Castle Rock (Starboard Passing) - **Longitude 114°14.200'E** by South of Latitude 22°11.000'N



## COA Course C03 – Coastal Overnight (54 nm)

**Start** – Tung Lung South Light (Port) **Longitude 114°17.500'E** by North of 22°14.000'N

Mark 1 – Tung Lung Island (Port)

Mark 2 – Steep Island (Starboard Passing)

Mark 3 – Trio Island (Port)

Mark 4 – Table Island (Port)

Mark 5 – Port Shelter Island (Starboard)

Mark 6 – Ma Tsai Pai (Port)

Mark 7 – Bluff Island (Starboard)

Mark 8 – South Nine Pin Island (Starboard)

Mark 9 – TCS 1 Buoy (Starboard Passing)

Mark 10 – Waglan Island (Starboard)

**Gate 1** – Po Toi South Light (Starboard) **Longitude 114°15.500'E** by North of 22°08.500'N

**Gate 2** – Yellow Weather Tower (Starboard) at Latitude 22°09.300'N, **Longitude 114°06.000'E** by North of 22°08.500'N

**Gate 3** – Soko South Light (Starboard) **Longitude 113°54.200'E** by North of 22°08.800'N

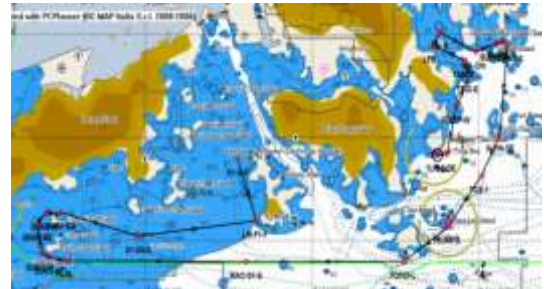
Mark 8 – Soko Marine Park West Buoy (Starboard) **Latitude 22°10.850'N, Longitude 113°35.510'E**

Mark 9 – North Soko Island (Starboard)

**Gate 4** – Shek Kwu Chau Red/White Buoy (Starboard Passing) **Longitude 113°59.550'E** by North of 22°10.000'N

Mark 10 – Lamma P1 Green Buoy (Port)

**Finish** – Shek Kok Tsui Light (Starboard) - **Latitude 22°14.000'N** by East of 114°05.500'E



## COA Course C04 – Coastal West (40 nm) (Long Course)

**Start** – Shek O Rock (Port Passing) - **Latitude 22°14.040'N**

Mark 1 – Waglan Island (Starboard)

Mark 2 – Po Toi Island (Starboard)

**Gate 1** – Yellow Weather Tower (Starboard Passing) **Longitude 114°06.000'E**,  
by North of 22°08.500'N

**Gate 2** – South Soko Light (Starboard) **Longitude 113°54.200'E**, by North of 22°08.800'N

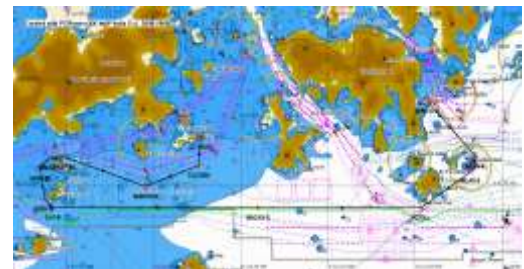
Mark 5 – Soko Marine Park West Buoy (Starboard) at 22°10.850'N, 113°53.510'E

Mark 6 – North Soko Island (Starboard)

**Gate 3** – Shek Kwu Chau Red White Buoy (Port passing) **Longitude 113°59.550'E** by North of 22°10.000'N

Mark 8 – Cheung Chau Virtual Turning Mark (Port) – Waypoint 22°11.000'N, 114°02.600'E

**Finish** – Cheung Chau Rock (Starboard Passing) - **Latitude 22°12.330'N**





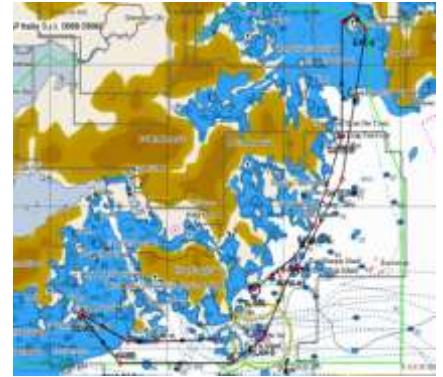
# COA STANDARD SAILING COURSES

---

## COA Course C05 – Coastal Overnight (75 nm)

**Start** – Tung Lung South Light (Port) **Longitude 114°17.500'E** by North of 22°14.000'N  
**Mark 1** – North Nine Pin Island (Starboard Passing)  
**Mark 2** – Basalt Island (Port Passing)  
**Mark 3** – Tai Long Tsui (Port Passing)  
**Mark 4** – East Ping Chau (Starboard – **Outside All Yellow Country Park Buoys**)  
**Gate 1** – Fan Tsang Chau (Starboard Passing) **Latitude 22°22.000'N** by West of 114°26.000'E  
**Mark 6** – South Nine Pin Island (Starboard)  
**Mark 7** – Waglan Island (Starboard)  
**Gate 2** – Po Toi South Light (Starboard) **Longitude 114°15.500'E** by North of 22°08.500'N  
**Mark 9** – Lamma Virtual Mark (Starboard) at Waypoint **22°09.000'N Longitude 114°06.000'E**  
**Gate 3** – Cheung Chau Rock (Starboard) **Latitude 22°12.330'N**  
**Mark 11** – Lamma Island (Port)  
**Gate 4** – Yuen Kok Light (Port Passing) **Longitude 114°09.000'E** by North of Latitude 22°10.700'N  
**Finish** – Castle Rock (Starboard Passing) - **Longitude 114°14.200'E** by South of Latitude 22°11.000'N

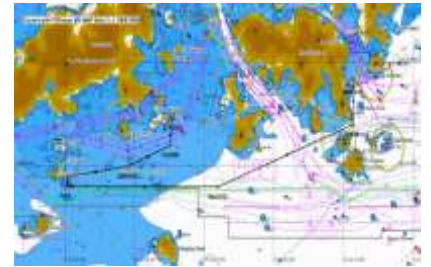
---



## COA Course C06 – Coastal Middle (30 nm)

**Start** – Shek O Rock (Port Passing) - **Latitude 22°14.040'N**  
**Mark 1** – Hok Tsui (Starboard)  
**Gate 1** – Yellow Weather Tower (Starboard Passing) **Longitude 114°06.000'E**,  
by North of 22°08.500'N  
**Gate 2** – Tau Lo Chau (Starboard) **Longitude 113°55.400'E**, by North of 22°08.500'N  
**Gate 3** – Shek Kwu Chau (Port passing) **Longitude 113°59.550'E**, by North of 22°10.000'N  
**Mark 5** – Cheung Chau Virtual Turning Mark (Port) – **GPS Waypoint 22°11.000'N, 114°02.600'E**  
**Finish** – Cheung Chau Rock (Starboard Passing) - **Latitude 22°12.330'N**

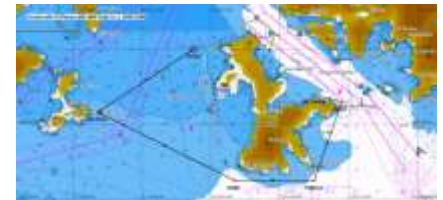
---



## COA Course C07 – Consul Cup (13 nm)

**Start** – Shek Kok Tsui (Port Passing) - **Latitude 22°14.000'N** by East of 114°05.500'E  
**Mark 1** – Cheung Chau Rock (Port)  
**Mark 2** – Lamma Island (Port)  
**Gate 1** – Yuen Kok Light (Port) **Longitude 114°09.000'E** by North of 22°10.000'N  
**Mark 3** – Wong Chuk Kok (Port)  
**Finish** – Mo Tak Bay Headland (Port Passing) **Longitude 114°09.000'E** by South of 22°13.000'N

---





# COA STANDARD SAILING COURSES

## COA Course E01 – Sai Kung Team Rally – Aberdeen Fleet (11 nm)

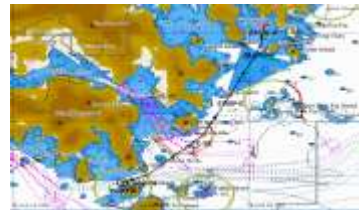
**Start** – Beaufort Island North Light (Starboard Passing) - **Longitude 114°14.650'E**

**Mark 1** – Hok Tsui (Port)

**Mark 2** – Tung Lung Island (Port Passing)

**Gate 1** – Steep Island (Port Passing) **Latitude 22°16.500'N** by West of 114°19.500'E  
(Start of COA Championship Leg)

**Finish** – Outside Pak A Bay **Latitude 22°20.5000'N** by East of 114°20.500'E



## COA Course E02 – Sai Kung Team Rally – Harbour Fleet (12 nm)

**Start** – Lei Yue Mun Green Light (Port Passing) - **Longitude 114°14.200'E**

**Mark 1** – Chai Wan Corner (Starboard) & TCS 4 Buoy (Port Passing)

**Mark 2** – Shek O Rock (Port)

**Mark 3** – Tung Lung Island (Port)

**Gate 1** – Steep Island (Port Passing) **Latitude 22°16.500'N** by West of 114°19.500'E  
(Start of COA Championship Leg)

**Finish** – Outside Pak A Bay **Latitude 22°20.5000'N** by East of 114°20.500'E



## COA Course E03 – Sai Kung Team Rally – Sai Kung Fleet (13 nm)

**Start** – Port Shelter Island (Port Passing) - **Latitude 22°20.000'N**

**Mark 1** – North Nine Pin Island (Starboard)

**Mark 2** – Steep Island (Port)

**Gate 1** – Steep Island (Port Passing) **Latitude 22°16.500'N** by West of 114°19.500'E  
(Start of COA Championship Leg)

**Finish** – Outside Pak A Bay **Latitude 22°20.5000'N** by East of 114°20.500'E



## COA Course E04 – MIRS Bay Seafood Rally (19 nm)

**Start** – Tung Lung South Light (Port Passing) **Longitude 114°17.300'E** by North of 22°13.800'N

**Mark 1** – North Nine Pin Island (Starboard Passing)

**Mark 2** – Basalt Island (Port Passing)

**Gate 1** – Tai Long Tsui (Port Passing) **Latitude 22°25.000'N**, by West of 114°25.500'E

**Gate 2** – Wong Mau Chau (Port Passing) **Latitude 22°27.000'N**, by West of 114°25.000'E

**Mark 5** – Kung Chau (Port Passing)

**Finish** – Cham Pai Light (Port) - **Longitude 114°21.900'E**





# COA STANDARD SAILING COURSES

## COA Course M11 – Macau Leg 1 (31 nm)

**Start** – Shek Kok Tsui (Port Passing) - **Latitude 22°14.000'N** by East of 114°05.500'E

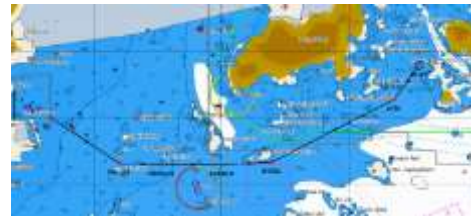
**Mark 1** – Cheung Chau (Starboard)

**Gate 1** – Zhi Zhou Island East Tip (Starboard) **Longitude 113°54.000'E**

by North of 22°06.000'N

**Gate 2** – Dalu Dao East Tip (Starboard) **Longitude 113°42.000'E**

**Finish** – Macau M2 Buoy (Starboard Passing) at **Latitude 22°09.940'N, 113°36.830'E**, by East of 113°36.500'E



## COA Course M12 – Macau Leg 1 (30 nm)

**Start** – Shek Kok Tsui (Port Passing) - **Latitude 22°14.000'N** by East of 114°05.500'E

**Mark 1** – Cheung Chau (Starboard)

**Mark 2** – Shek Kwu Chau Red/White Buoy (Starboard Passing)

**Longitude 113°59.550'E** by North of 22°10.000'N

**Mark 3** – Tau Lo Chau (Starboard)

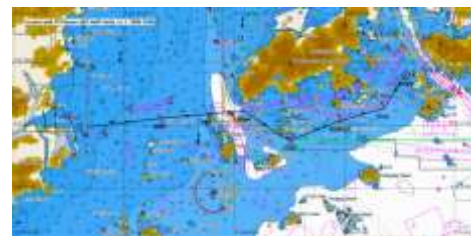
**Gate 1** – Soko Southern Light (Starboard) **Longitude 113°54.200'E** by North of 22°08.500'N

**Mark 5** – Fan Lau Virtual Mark (Port) at **GPS Waypoint 22°11.000'N, 113°51.000'E**

**Gate 2** – Rongshutou Light (Port Passing) **Longitude 113°47.730'E** by South of 22°11.500'N

**Mark 7** – Qingzhou Island (Starboard Passing)

**Finish** – Macau M2 Buoy (Starboard Passing) at **Latitude 22°09.940'N, 113°36.830'E**, by East of 113°36.500'E



## COA Course M13 – Macau Leg 1 (32 nm)

**Start** – Shek Kok Tsui (Port Passing) - **Latitude 22°14.000'N** by East of 114°05.500'E

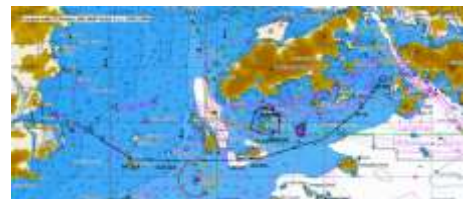
**Gate 1** – **Longitude 114°00.000'E**, between Latitude 22°09.000'N and 22°08.000'N,

**Gate 2** – Zhi Zhou Island East Tip (Starboard) **Longitude 113°54.000'E**

by North of 22°06.000'N (Provision Cut-Off 1)

**Gate 3** – Dalu Dao East Tip (Starboard) **Longitude 113°42.000'E** (Provision Cut-Off 2)

**Finish** – Macau M2 Buoy (Starboard Passing) at **Latitude 22°09.940'N, 113°36.830'E** by East of 113°36.500'E



## COA Course M21 – Macau Leg 2 (24 nm)

**Start** – Macau M2 Buoy (Port Passing) **Longitude 113°36.830'E** by North of 22°09.500'N

**Mark 1** – Sanjiao Island (Starboard)

**Mark 2** – Chitan Island (Port)

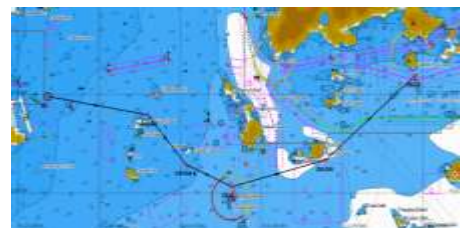
**Gate 1** – Dayapai Light (Starboard Passing) **Longitude 113°48.200'E** by South of 22°05.800'N

**Gate 2** – Zhi Zhou Island East Tip (Port Passing) **Longitude 113°54.000'E**

by North of 22°06.000'N

**Finish** – Shek Kwu Chau Red/White Buoy (Port Passing) **Longitude 113°59.550'E**

By North of 22°10.000'N



## COA Course M22 – Macau Leg 2 (24 nm)

**Start** – Macau M2 Buoy (Port Passing) **Longitude 113°36.830'E** by North of 22°09.500'N

**Mark 1** – Qingzhou Island (Starboard Passing)

**Gate 1** – Rongshutou Light (Starboard Passing) **Longitude 113°47.730'E**

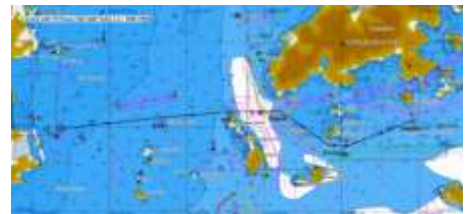
by South of 22°11.500'N

**Mark 3** – Fan Lau Virtual Mark (Starboard) at **GPS Waypoint 22°11.000'N, 113°51.000'E**

**Gate 2** – Soko Southern Light (Port) **Longitude 113°54.200'E** by North of 22°08.500'N

**Mark 5** – Tau Lo Chau (Port)

**Finish** – Shek Kwu Chau Red/White Buoy (Port Passing) **Longitude 113°59.550'E** by North of 22°10.000'N



## COA Course M23 – Macau Leg 2 (24 nm)

**Start** – Macau M2 Buoy (Port Passing) **Longitude 113°36.830'E** by North of 22°09.500'N

**Mark 1** – Sanjiao Island (Starboard)

**Gate 1** – Chitan Island Light (SB Passing) **Longitude 113°45.700'E** by South of 22°08.000'N

**Gate 2** – Zhi Zhou Island East Tip (Port Passing) **Longitude 113°54.000'E**

by North of 22°06.000'N

**Finish** – **Longitude 114°00.000'E**, between Latitude 22°09.000'N and 22°08.000'N,

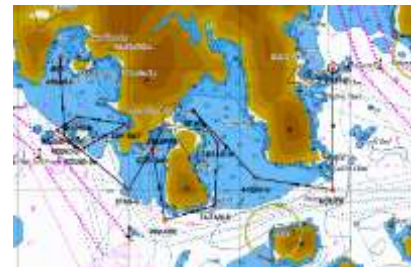




# COA STANDARD SAILING COURSES

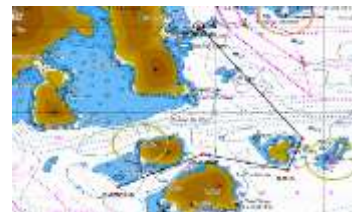
## COA Course S01 – Four Bays Rally (16 nm)

**Start** – Shek O Rock (Port) - **Latitude 22°14.040'N**  
**Mark 1** – Hok Tsui (Starboard)  
**Bay 1** – Stanley Main Beach, Drop off East of Longitude **114°13.000'E**  
**Mark 2** – Wong Ma Kok (Starboard)  
**Bay 2** – Blake Pier / Stanley Bay, Drop off South of Latitude **22°12.850'N**  
**Mark 3** – Round Island (Starboard)  
**Bay 3** – Chung Hom Kok Bay, Drop off West of Longitude **114°11.900'E**  
**Mark 4** – Round Island (Starboard)  
**Finish** - **Bay 4 – Deep Water Bay**, Drop off South of Latitude **22°14.200'N**



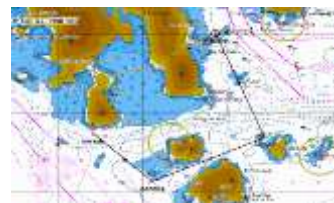
## COA Course S02 - Shek O - 1 (7 nm)

**Start** – Shek O Rock (Port Passing) - **Latitude 22°14.040'N**  
**Mark 1** – Sung Kong Island (Starboard)  
**Mark 2** – Po Toi Island (Port)  
**Finish** – Castle Rock (Starboard) **Longitude 114°14.220'E** by North of **22°10.000'N**



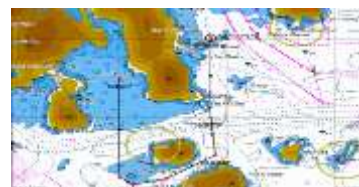
## COA Course S03 - Shek O – 2 (8 nm)

**Start** – Shek O Rock (Port Passing) - **Latitude 22°14.040'N**  
**Mark 1** – Fury Rock (Starboard)  
**Mark 2** – Po Toi Island (Port)  
**Gate** – Castle Rock (Starboard) **Longitude 114°14.220'E** by North of **22°10.000'N**  
**Finish** – Bluff Head Light (Starboard Passing) **Longitude 114°12.840'E** by North of **22°11.000'N**



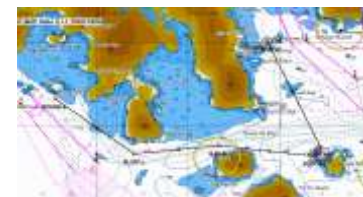
## COA Course S04 - Shek O - 3 (8 nm)

**Start** – Shek O Rock (Port Passing) - **Latitude 22°14.040'N**  
**Mark 1** – Beaufort Island (Starboard)  
**Gate** – Castle Rock (Starboard) **Longitude 114°14.220'E** by North of **22°10.000'N**  
**Finish** – Tai Tam Bay - **Latitude 22°13.000'N**



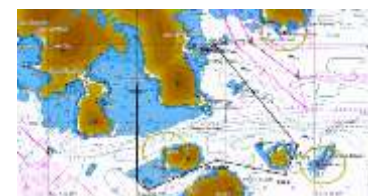
## COA Course S05 - Shek O - 4 (9 nm)

**Start** – Shek O Rock (Port Passing) - **Latitude 22°14.040'N**  
**Mark 1** – Fury Rock (Starboard)  
**Mark 2** – Beaufort Island (Port Passing)  
**Gate** – Bluff Head Light (Starboard Passing) **Longitude 114°12.840'E** by North of **22°11.000'N**  
**Finish** – Round Island Light (Starboard Passing) **Longitude 114°11.110'E** by North of **22°12.500'N**



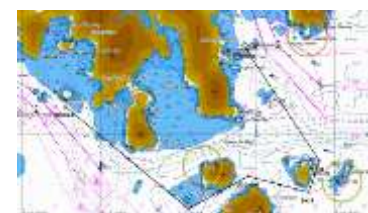
## COA Course S06 - Shek O - 5 (10 nm)

**Start** – Shek O Rock (Port Passing) - **Latitude 22°14.040'N**  
**Mark 1** – Sung Kong Island (Starboard)  
**Mark 2** – Po Toi Island (Port)  
**Gate** – Castle Rock (Starboard) **Longitude 114°14.220'E** by North of **22°10.000'N**  
**Finish** – Tai Tam Bay - **Latitude 22°13.000'N**



## COA Course S07 - Shek O - 6 (11 nm)

**Start** – Shek O Rock (Port) - **Latitude 22°14.040'N**  
**Mark 1** – Sung Kong Island (Starboard)  
**Mark 2** – Po Toi Island (Port)  
**Gate 1** – Castle Rock (Starboard) **Longitude 114°14.220'E** by North of **22°10.000'N**  
**Gate 2** – Bluff Head Light (Starboard Passing) **Longitude 114°12.840'E** by North of **22°11.000'N**  
**Finish** – Round Island Light (Starboard) **Longitude 114°11.110'E** by North of **22°12.500'N**





# COA STANDARD SAILING COURSES

---

## COA Course S08 - Shek O - 7 (12 nm)

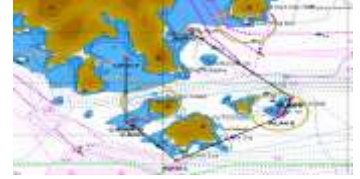
**Start** – Shek O Rock (Port Passing) - **Latitude 22°14.040'N**

**Mark 1** – Waglan Island (Starboard)

**Gate 1** – Po Toi Light (Starboard) **Longitude 114°15.400'E** by North of 22°08.500'N

**Gate 2** – Castle Rock (Starboard) **Longitude 114°14.220'E** by North of 22°10.000'N

**Finish** – Tai Tam Bay - **Latitude 22°13.000'N**



---

## COA Course S09 - Shek O - 8 (13 nm)

**Start** – Shek O Rock (Port Passing) - **Latitude 22°14.040'N**

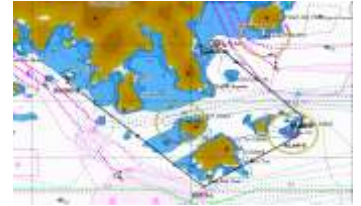
**Mark 1** – Waglan Island (Starboard)

**Mark 2** – Po Toi Island (Starboard)

**Gate 1** – Po Toi Light (Starboard) **Longitude 114°15.400'E** by North of 22°08.500'N

**Gate 2** – Bluff Head Light (Starboard Passing) **Longitude 114°12.800'E** by North of 22°11000'N

**Finish** – Round Island Light (Starboard) **Longitude 114°11.110'E** by North of 22°12.500'N

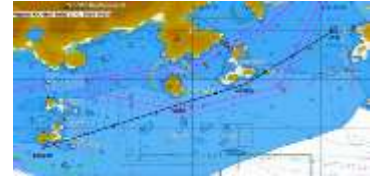




# COA STANDARD SAILING COURSES

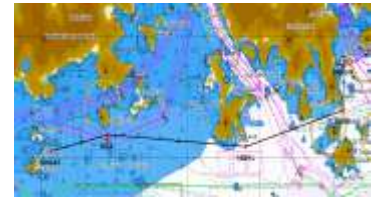
## COA Course W01 – 3 Days Rally Day 1 – Lamma to Soko (12 nm)

**Start** – Shek Kok Tsui (Port Passing) - **Latitude 22°14.000'N** by East of 114°05.500'E  
**Mark 1** – Cheung Chau (Starboard)  
**Gate** – Shek Kwu Chau Red/White Buoy (Port) **Longitude 113°59.550'E**  
**Finish** – South Soko Light (Starboard) **Longitude 113°54.200'E** by North of 22°08.800'N



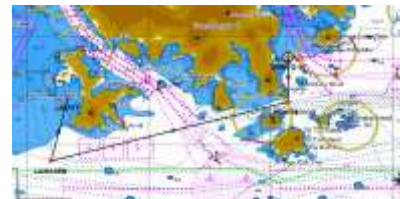
## COA Course W02 – 3 Days Rally Day 1 – Shek O to Soko (21 nm)

**Start** – Shek O Rock (Port) - **Latitude 22°14.040'N**  
**Mark 1** – Hok Tsui (Starboard)  
**Gate 1** – Yuen Kok Light (Starboard Passing) **Longitude 114°09.000'E** by North of 22°10.000'N  
**Gate 2** – Shek Kwu Chau Red/White Buoy (Port Passing) **Longitude 113°59.550'E**  
**Finish** – Soko Cheung Muk Tau (Starboard Passing) - **Longitude 113°55.600'E**  
by North of 22°10.000'N



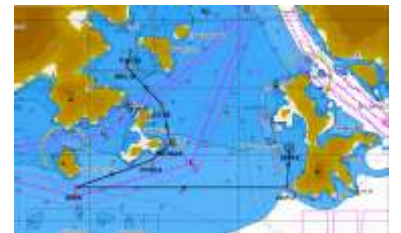
## COA Course W03 – 3 Days Rally Day 1 – Shek O to Lamma (15 nm)

**Start** – Shek O Rock (Port) - **Latitude 22°14.040'N**  
**Mark 1** – Hok Tsui (Starboard)  
**Gate 1** – Yuen Kok Light (Starboard Passing) **Longitude 114°09.000'E** by North of 22°10.000'N  
**Gate 2** – Yellow Weather Tower (Starboard) at Latitude 22°09.300'N, **Longitude 114°06.000'E** by North of 22°08.500'N  
**Finish** – Lamma P5 Green Buoy (Port Passing) – **Latitude 22°12.200'N**



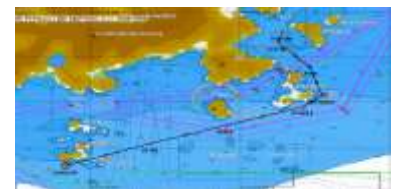
## COA Course W04 – 3 Days Rally Day 2 – Lamma to Hei Ling Chau (15 nm)

**Start** – Lamma P5 Green Buoy (Starboard Passing) – **Latitude 22°12.200'N**  
**Mark 1** – Lamma P1 Green Buoy (Starboard)  
**Gate 1** – Shek Kwu Chau Red/White Buoy (Starboard) **Longitude 113°59.550'E**  
**With Shek Kwu Chau to Port**  
**Gate 2** – Cheung Chau Rock (Starboard Passing) - **Latitude 22°12.330'N**  
**Finish** – Hei Ling Chau West Dam Green Light (Starboard Passing) –  
**Latitude 22°15.110'N** By East of 114°01.000'E



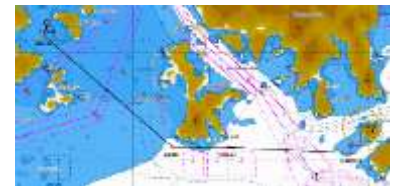
## COA Course W05 – 3 Days Rally Day 2 – Soko to Hei Ling Chau (12 nm)

**Start** – South Soko Light (Port Passing) **Longitude 113°54.200'E** by North of 22°08.800'N  
**Gate 1** – Shek Kwu Chau Red/White Buoy (Starboard) **Longitude 113°59.550'E**  
**Gate 2** – Cheung Chau Rock (Starboard Passing) - **Latitude 22°12.330'N**  
**Finish** – Hei Ling Chau West Dam Green Light (Starboard Passing) –  
**Latitude 22°15.110'N** by East of 114°01.000'E



## COA Course W06 – 3 Days Rally Day 3 – Hei Ling Chau to Po Toi (14 nm)

**Start** – Hei Ling Chau West Dam Green Light (Port Passing) –  
**Latitude 22°15.110'N** By East of 114°01.000'E  
**Mark 1** – Lamma Island (Port)  
**Gate 1** – Yuen Kok Light (Port Passing) **Longitude 114°09.000'E** by North of 22°10.000'N  
**Finish** – Castle Rock (Port Passing) **Longitude 114°14.220'E** by North of 22°10.000'N



## COA Course W07 – 3 Days Rally Day 3 – Hei Ling Chau to Shek Kok Tsui (12 nm)

**Start** – Hei Ling Chau West Dam Green Light (Port Passing) –  
**Latitude 22°15.110'N** By East of 114°01.000'E  
**Mark 1** – Cheung Chau Rock (Port)  
**Gate 1** – Lamma P1 Green Buoy (Port) **Latitude 22°11.000'N**  
**Gate 2** – Lamma Wave Measuring West Buoy (Starboard) **Latitude 22°13.240'N**  
**Finish** – Lamma Shek Kok Tsui (Starboard Passing) **Latitude 22°14.000'N** By East of 114°05.000'N





# COA STANDARD SAILING COURSES

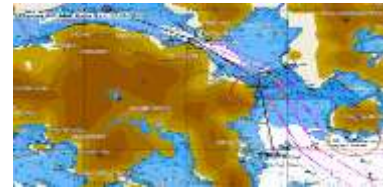
## COA Course X01 – Christmas Cup Harbour Fleet (5.5 nm)

**Start** – Harbour E1 Green Buoy (Starboard Passing) **Longitude 114°12.440'E**

**Mark 1** – Lei Yue Mun (Passing)

**Mark 2** – Chai Wan Corner (Starboard) & TCS 4 Buoy (Port Passing)

**Finish** – Shek O Rock (Port) - **Latitude 22°14.040'N**

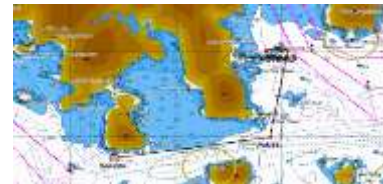


## COA Course X02 – Christmas Cup Aberdeen Fleet (5.5 nm)

**Start** – Bluff Head Light (Port Passing) **Longitude 114°12.440'E** by North of 22°11.000'N

**Mark 1** – Hok Tsui (Port)

**Finish** – Shek O Rock (Port) - **Latitude 22°14.040'N** with Hong Kong Island to SB



## COA Course X03 – Christmas Cup Sai Kung Fleet (7.8 nm)

**Start** – Ma Tsai Pai Light (Starboard Passing) **Latitude 22°19.420'N** by West of 114°20.200'E

**Mark 1** – Steep Island (Starboard Passing)

**Mark 2** – Tung Lung Island (Starboard)

**Finish** – Shek O Rock (Port) - **Latitude 22°14.040'N**

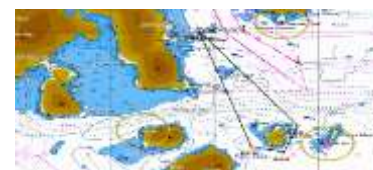


## COA Course X04 – Christmas Cup Leg 2 (Sung Kong) (8 nm)

**Start** – Shek O Rock (Port) - **Latitude 22°14.040'N**

**Mark 1** – Sung Kong Island (Starboard)

**Finish** – Shek O Rock (Starboard) - **Latitude 22°14.040'N**



## COA Course X05 – Christmas Cup Leg 2 (Round Island) (8.5 nm)

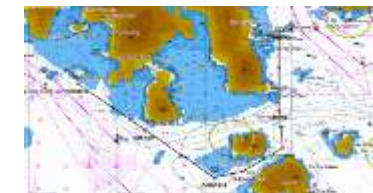
**Start** – Shek O Rock (Port) - **Latitude 22°14.040'N**

**Mark 1** – Beaufort Island (Starboard)

**Mark 2** – Castle Rock (Starboard)

**Gate 2** – Bluff Head Light (Starboard Passing) **Longitude 114°12.800'E** by North of 22°11000'N

**Finish** – Round Island Light (Starboard) **Longitude 114°11.110'E** by North of 22°12.500'N



## COA Course X06 – Christmas Cup Leg 2 (Waglan) (9.5 nm)

**Start** – Shek O Rock (Port) - **Latitude 22°14.040'N**

**Mark 1** – Waglan Island (Starboard)

**Mark 2** – Sung Kong Island (Starboard)

**Finish** – Shek O Rock (Starboard) - **Latitude 22°14.040'N**

